

# 4206 Claire St

*Lake Edge Neighborhood*

Move-in ready, cozy bungalow offers two bedrooms, sun-filled living room, hardwood floors and excellent east side location near bike paths, cafes and restaurants, Pinney Library and YMCA. Great kitchen layout with separate dining area and access to a large fenced-in back yard with mature trees, patio and 1 1/2 car garage. Lower level has finished space and recently installed drain tile and sump pump by Badger Basement. Energy efficient windows throughout.

**2 Bedroom**

**1 Bathroom**

**1 Garage**

**1,155 SqFt**



Contact: Jill Skeans  
608-513-0498  
lewanaj@gmail.com



## 4206 Claire St.

- Hardwood floors
- Large bay window
- Entry closet
- Dining room off living area

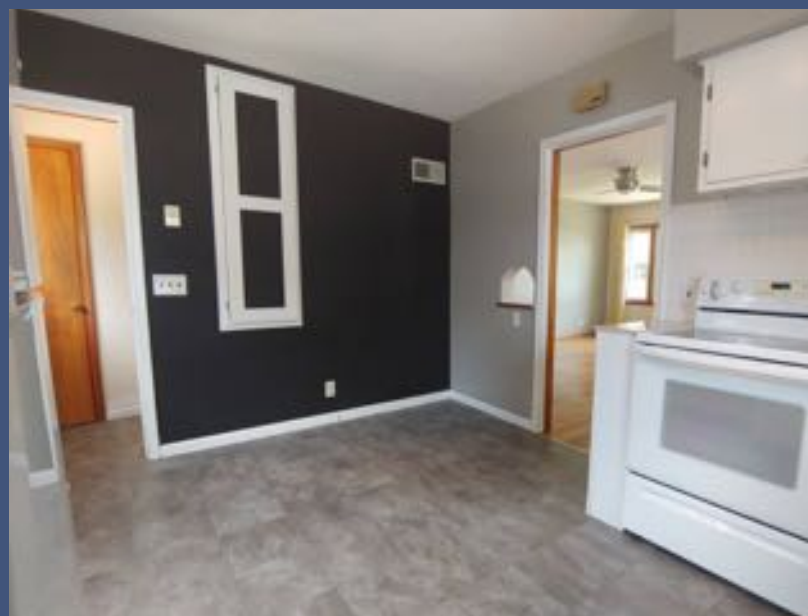




## 4206 Claire St.

What's  
included:

- Range/oven
- Refrigerator
- Washer/dryer
- Window coverings
- Water softener
- Lawn mower



## 4206 Claire St.

- 2 bedroom
- 1 bath
- Gas furnace
- Central air
- Energy efficient windows



## 4206 Claire St.

- Partially finished basement with rec room

- Drain tile and sump pump system





## 4206 Claire St.

- 1 1/2 car detached garage
- Large brick patio
- Mature trees
- Fenced back yard
- Mature trees



# 4206 Claire St.

East Madison location near bike paths, cafes and restaurants, Pinney Library and YMCA. School district is Nuestro Mundo dual language/Allis, Sennett MS, LaFollete HS.

